

SICAT-ACM

Synthetic carbon carriers: mesoC+

Typical properties

mesoC+ is a highly mesoporous synthetic carbon with controlled shapes and high mechanical strength.

Pore structure :

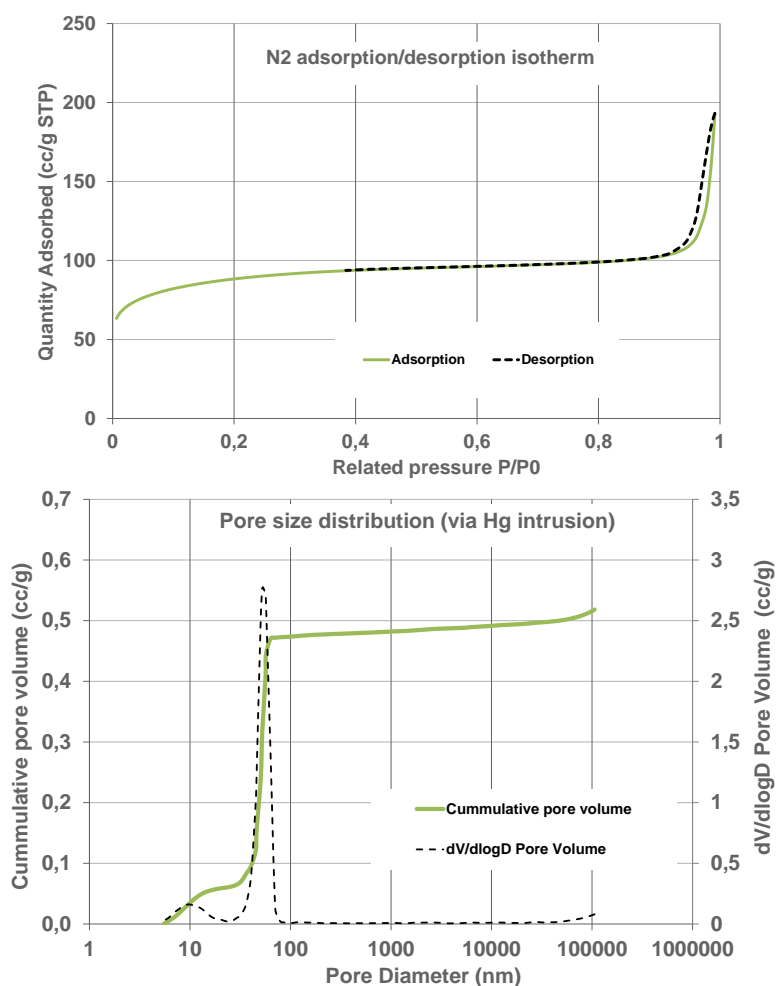
mesoC+ combines micro, meso and macropores. While micropores develops a medium BET surface area, the extended pore volume of meso and macropores favor mass transfer and maximize the catalytic surface available for the reaction.

Product	BET Surface Area	Microporous Surface Area	Pore Volume*	Crushing Strength**
mesoC+	320 m ² /g	210 m ² /g	0.40 cc/g	40 N/mm

Typical properties of 3mm pellets

* measured by water absorption

** Grain method per ASTM D4179 & D6175



Purity

Typical content (ppm)	mesoC+
Fe	10
Ca	15
Na	50
K	150
Si	1000
S	300
% ash	0,3

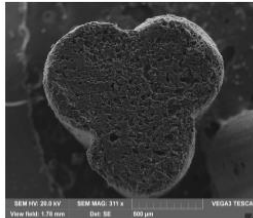
Standard shapes available :

Cylinders

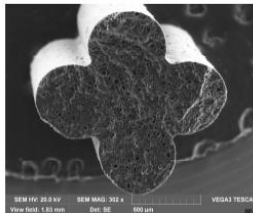


Ø 2/3/4/5/6,35mm

Multilobes



Ø 1,2/1,6mm trilobes
Ø 1,4/1,6mm quadrilobes



(Rings)



Øext. 5/6/8/13,2mm
Øint. 3/4/5/6/7/8mm
thickness: 1,5mm mini

Product nomenclature:

Shape
↓ ↓ Size
mesoC+-E3: mesoC+ extrudates of 3mm

Shape:

"E" Extrudate

"T" Trilobe

"Q" Quadrilobe

"R" Rings

Size: external diameter (mm)

for rings: external/internal diameter (mm)